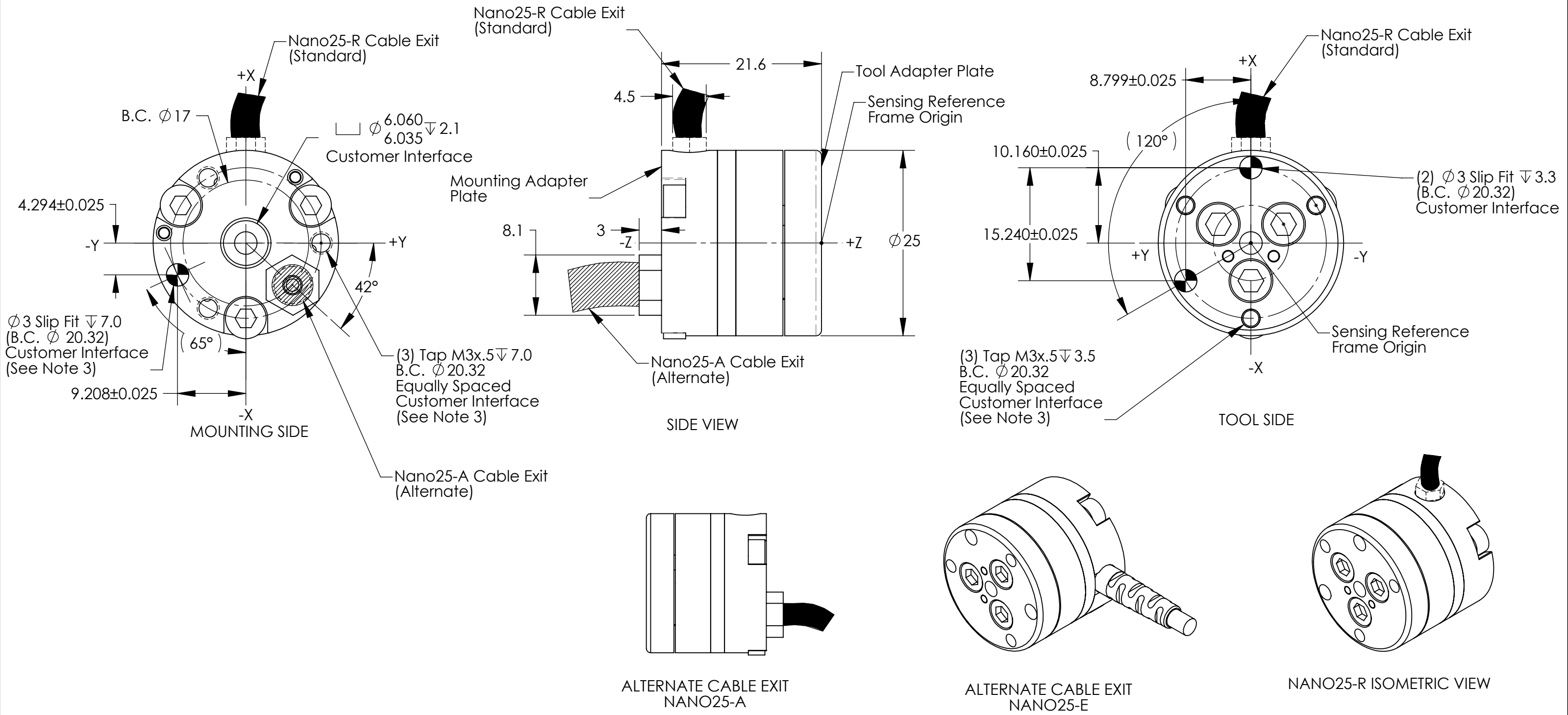
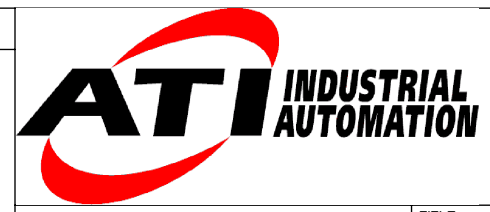


Rev.	Description	Initiator	Date
13	Eco 7635; Add -E cable exit.	CCS	3/15/2010



- Notes:
1. Mounting Adapter, Tool Adapter, and transducer made of Stainless Steel.
 2. **WARNING: DO NOT LOOSEN OR REMOVE INTERFACE PLATES OR CABLE FITTING DUE TO POTENTIAL DAMAGE.**
 3. **DO NOT EXCEED INTERFACE DEPTH, MAY CAUSE DAMAGE.**
 4. Connector (not shown) has 17mm diameter and is 67.5mm long.

NOTES: UNLESS OTHERWISE SPECIFIED
 DO NOT SCALE DRAWING. DRAWN IN SOLIDWORKS.
 ALL DIMENSIONS ARE IN MILLIMETERS.



1031 Goodworth Drive, Apex, NC 27539, USA
 Tel: +1.919.772.0115 Email: info@ati-ia.com
 Fax: +1.919.772.8259 www.ati-ia.com
 ISO 9001 Registered Company

PROPERTY OF ATI INDUSTRIAL AUTOMATION, INC. NOT TO BE REPRODUCED IN ANY MANNER EXCEPT ON ORDER OR WITH PRIOR WRITTEN AUTHORIZATION OF ATI.

DRAWN BY: B. Digeso 3/8/00		TITLE: Nano25 Transducer		
CHECKED BY: P.Fusco 7/17/06		SCALE: 2:1	SIZE: B	DRAWING NUMBER: 9230-05-1083
WEIGHT LBS:		PRODUCT RELEASE # -	DATE:	REVISION: 13
ASSEMBLY REF:		SHEET 1 OF 1		

